



Smart Manager Version 2

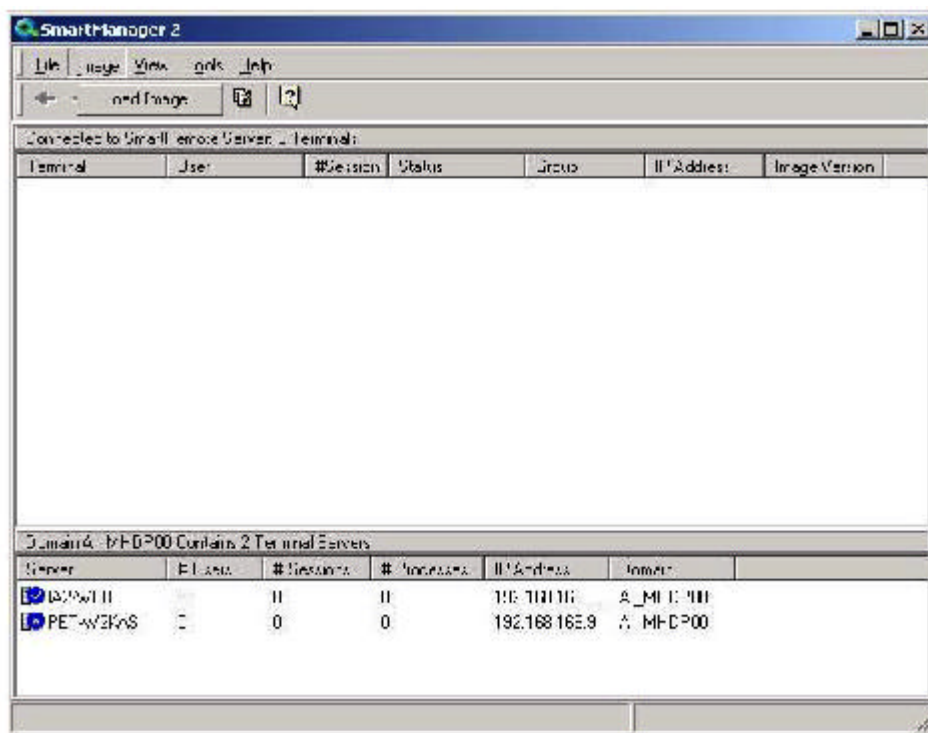
Updating Image Files

Smart Manager 2.0 must first be installed in the system before it can be used. You will need a Windows NT Terminal Server or a Windows 2000 Server with Terminal Services installed (remote Administration Services are also possible). The Server must run within a Domain structure. Every time you want to upgrade a new version image, you must first run the Smart Manager 2.0 utility.

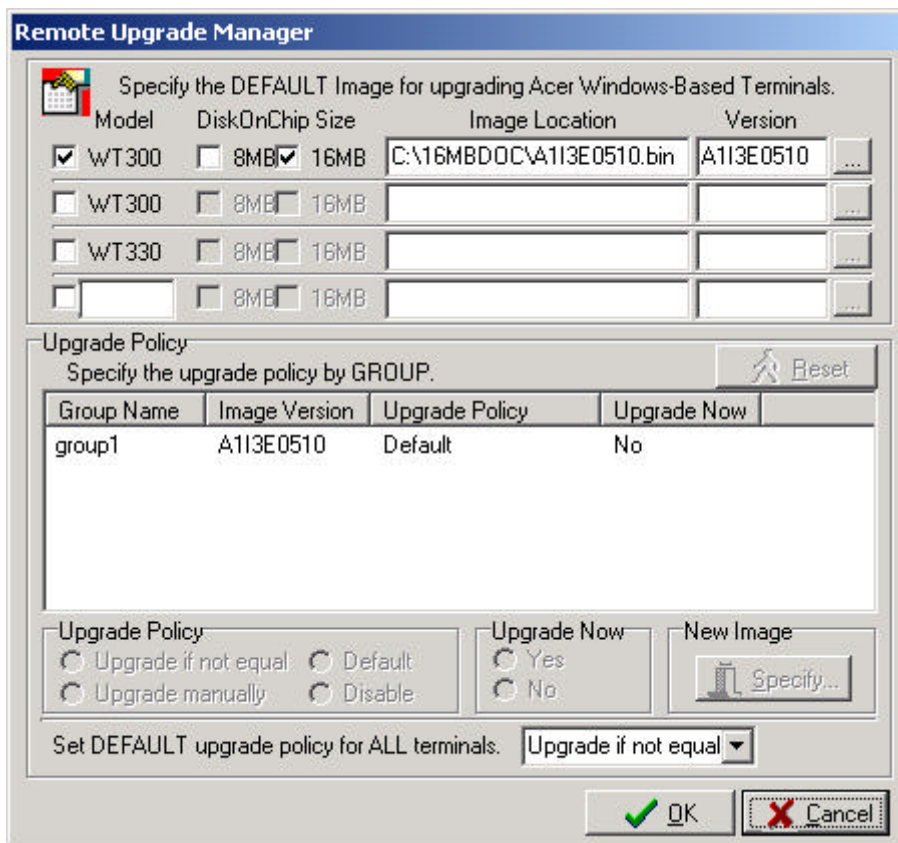
Server site

To run the server site, follow the steps below:

- 1 Click on the Start menu, point to Programs and select Smart Manager 2.0.
- 2 Click Smart Manager to run the utility program.
- 3 To load the image, go to the Image menu and choose Load image from the pull down menu.

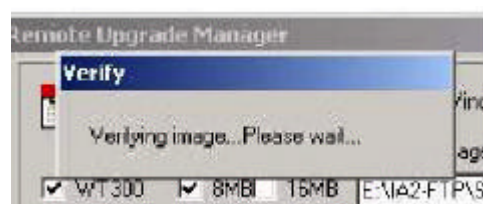


4 The following dialog box will be displayed. Select or specify a terminal you want to use, the Disk on Chip (DOC) size, the image location and version. Click OK.



5 It is also possible to use the Group Update option from Image Version A113xxxx on. If you upgrade older Images, however, it is recommended to use the update by Model.

6 When the new image is loaded, the system will first verify it. The process might take a few minutes.



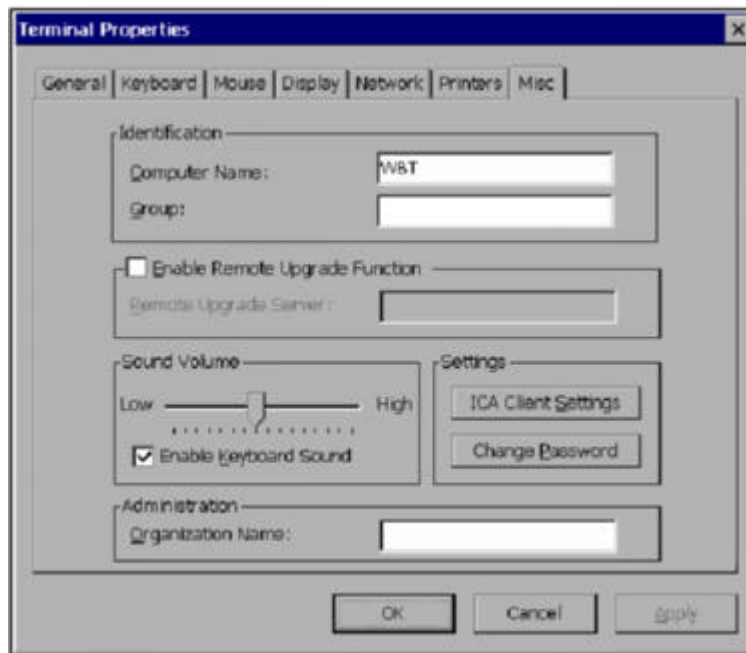
Any time the terminal connects to the server, the new image will be loaded automatically onto the terminal's Disk On Chip (DOC) Flash ROM.

Terminal site (Windows-based terminal site)

To run the terminal site follow the steps below:

1 Press F2 in the Terminal Connection Manager to run the Terminal Properties Setting Program. Please refer to your Acer WT 300/WT 300E user's guide for more information.

2 Click on the Misc tab and check the Enable Remote Upgrade Function checkbox.



Note: For more information on changing the settings of the terminal, refer to the Acer WT 300/WT 300E user's guide.

3 Specify the network address of the server.

4 Click OK to apply.

5 Reboot the terminal.