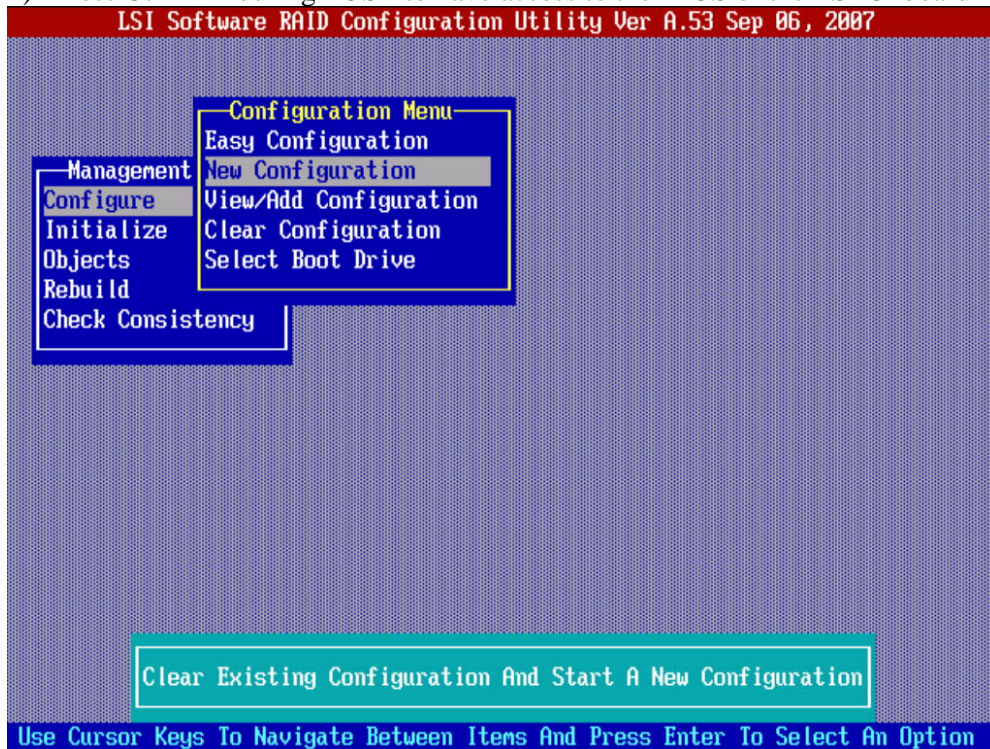
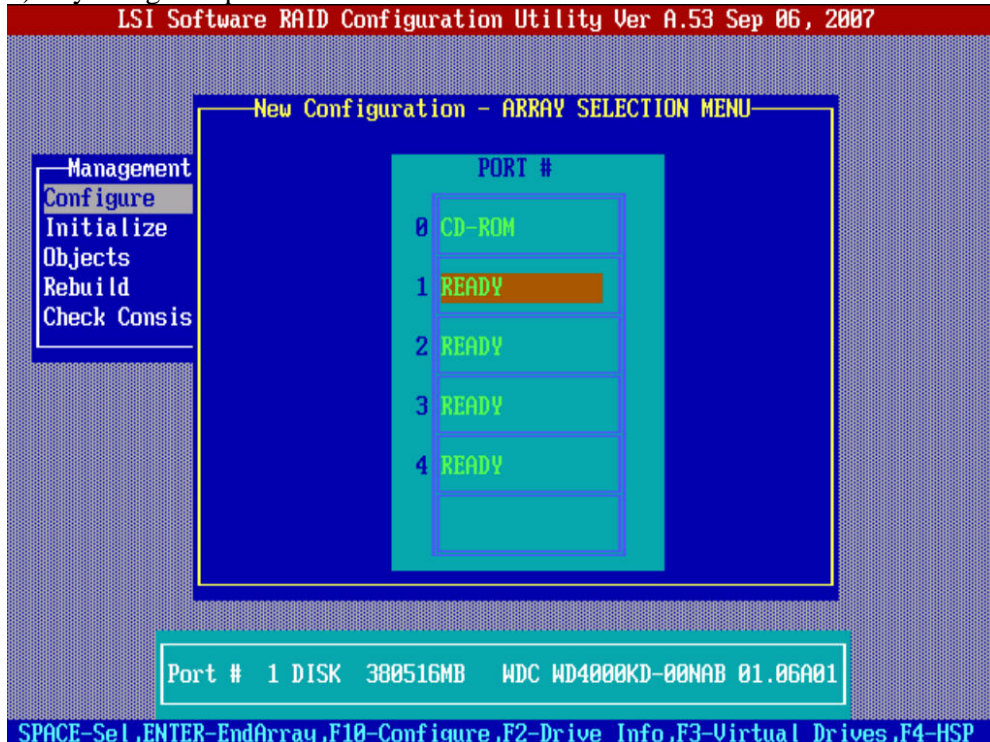


# How To create RAID 10 with onboard RAID Controller on G330Mk2

- 1) Press Ctrl + M during POST to have access to the BIOS of the LSI Onboard Raid Controller

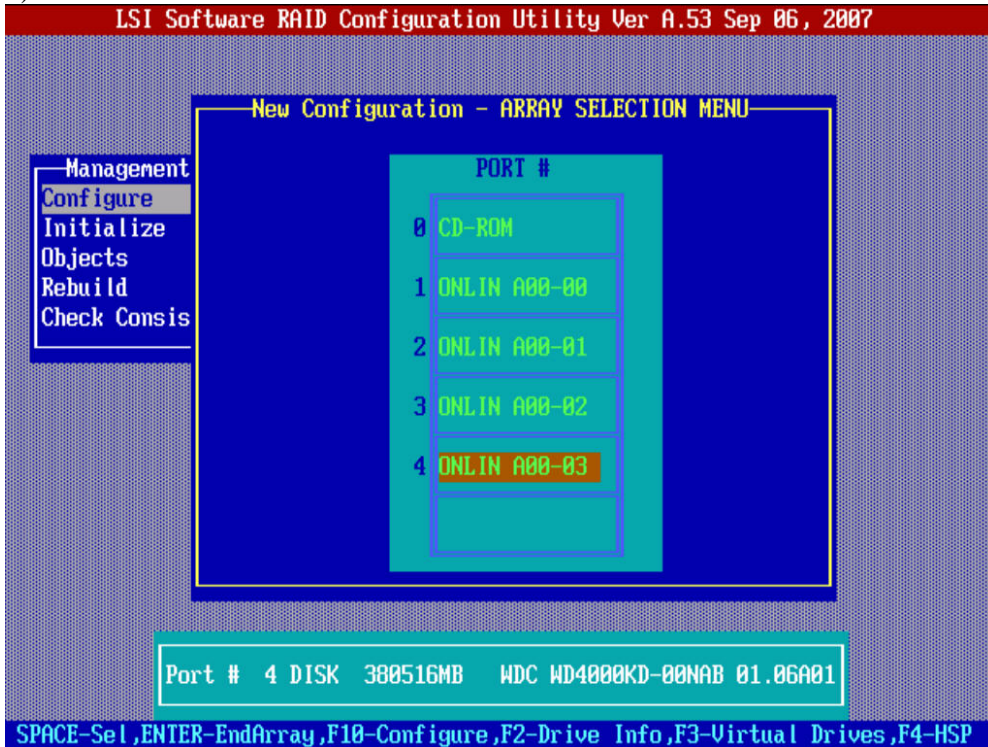


- 2) Select "Configure" and then "New Configuration"
- 3) Select "Yes" on the Proceed pop-up
- 4) By using the space bar select all four drives needed for the RAID 10

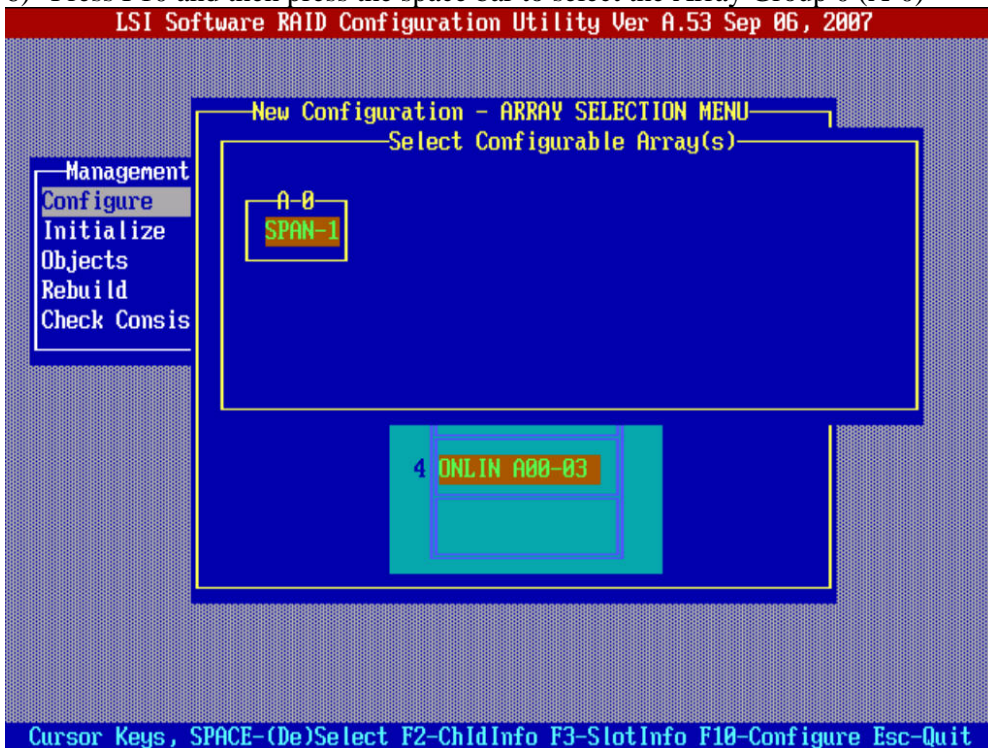


# How To create RAID 10 with onboard RAID Controller on G330Mk2

5) All the disks will be marked as Online



6) Press F10 and then press the space bar to select the Array Group 0 (A-0)



7) Press F10

# How To create RAID 10 with onboard RAID Controller on G330Mk2

8) Press enter on the first option (RAID) and select RAID 10

LSI Software RAID Configuration Utility Ver A.53 Sep 06, 2007

Virtual Drive(s) Configured

VD	RAID	Size	#Stripes	StripeSz	Status
0	0	1522064MB	4	64 KB	ONLINE

Management Menu:

- Manage
- Configure
- Initializ
- Objects
- Rebuild
- Check Con

Virtual Drive 0 Configuration:

- RAID = 0
- Size = 1522064MB
- DWC = Off
- RA = On
- Accept
- SPAN = NO

RAID Level Selection:

- RAID 0
- RAID 5
- RAID 10

Choose RAID Level For This VD

Use Cursor Keys To Navigate Between Items And Press Enter To Select An Option

9) Select Accept and press Enter

10) In the Save Configuration pop-up, select "Yes" and press enter

LSI Software RAID Configuration Utility Ver A.53 Sep 06, 2007

Configuration Menu:

- Easy Configuration
- New Configuration
- View/Add Configuration

Management Menu:

- Management
- Configure
- Initializ
- Objects
- Rebuild
- Check Con

Virtual Drive(s) Configured

VD	RAID	Size	#Stripes	StripeSz	Status
0	10	761032MB	4	64 KB	ONLINE

Save Configuration?

- Yes
- No

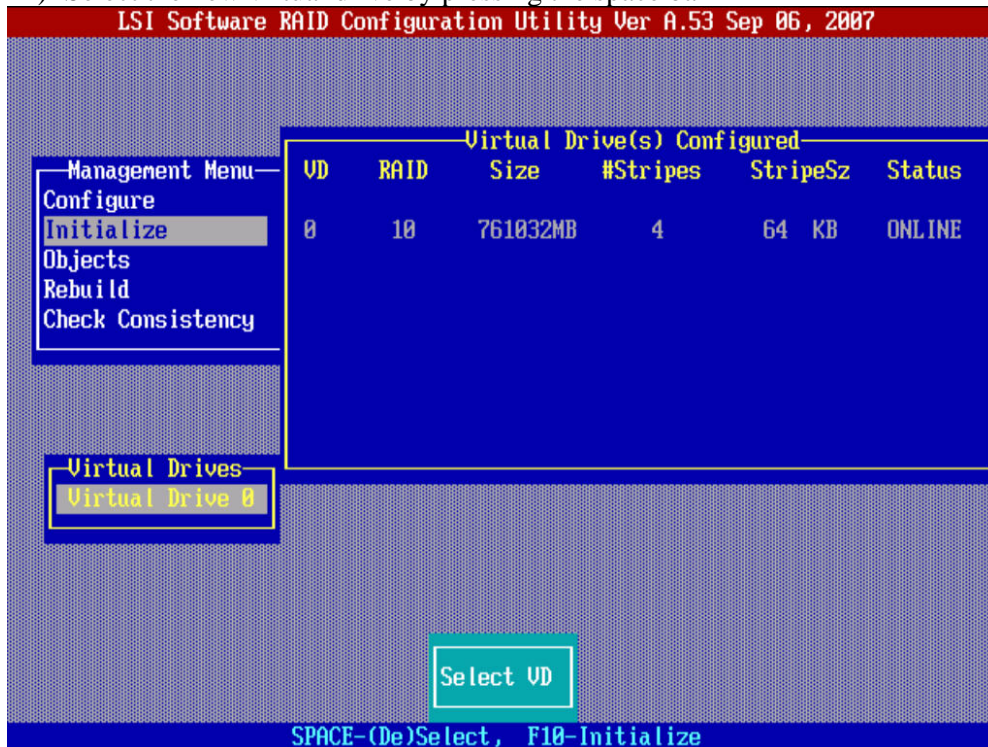
Select Yes Or No

Use Cursor Keys To Navigate Between Items And Press Enter To Select An Option

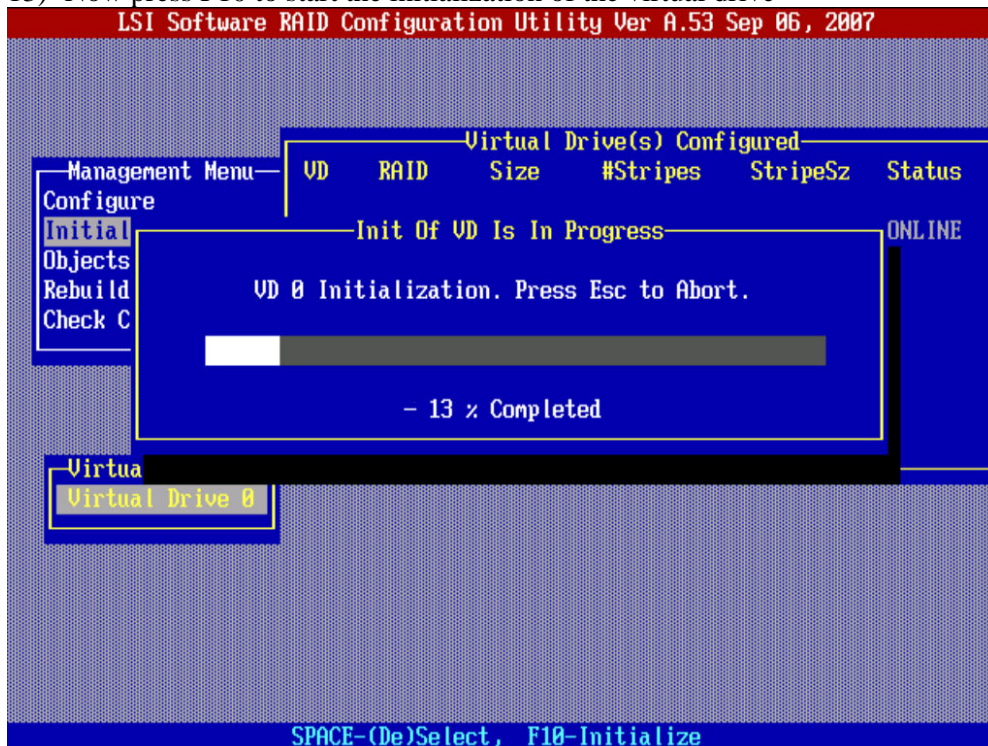
# How To create RAID 10 with onboard RAID Controller on G330Mk2

11) Now select the "Initialization" option in the main menu

12) Select the new virtual drive by pressing the space bar



13) Now press F10 to start the initialization of the virtual drive



14) Press Escape button and then reboot the system

15) The RAID 10 is now ready to be used